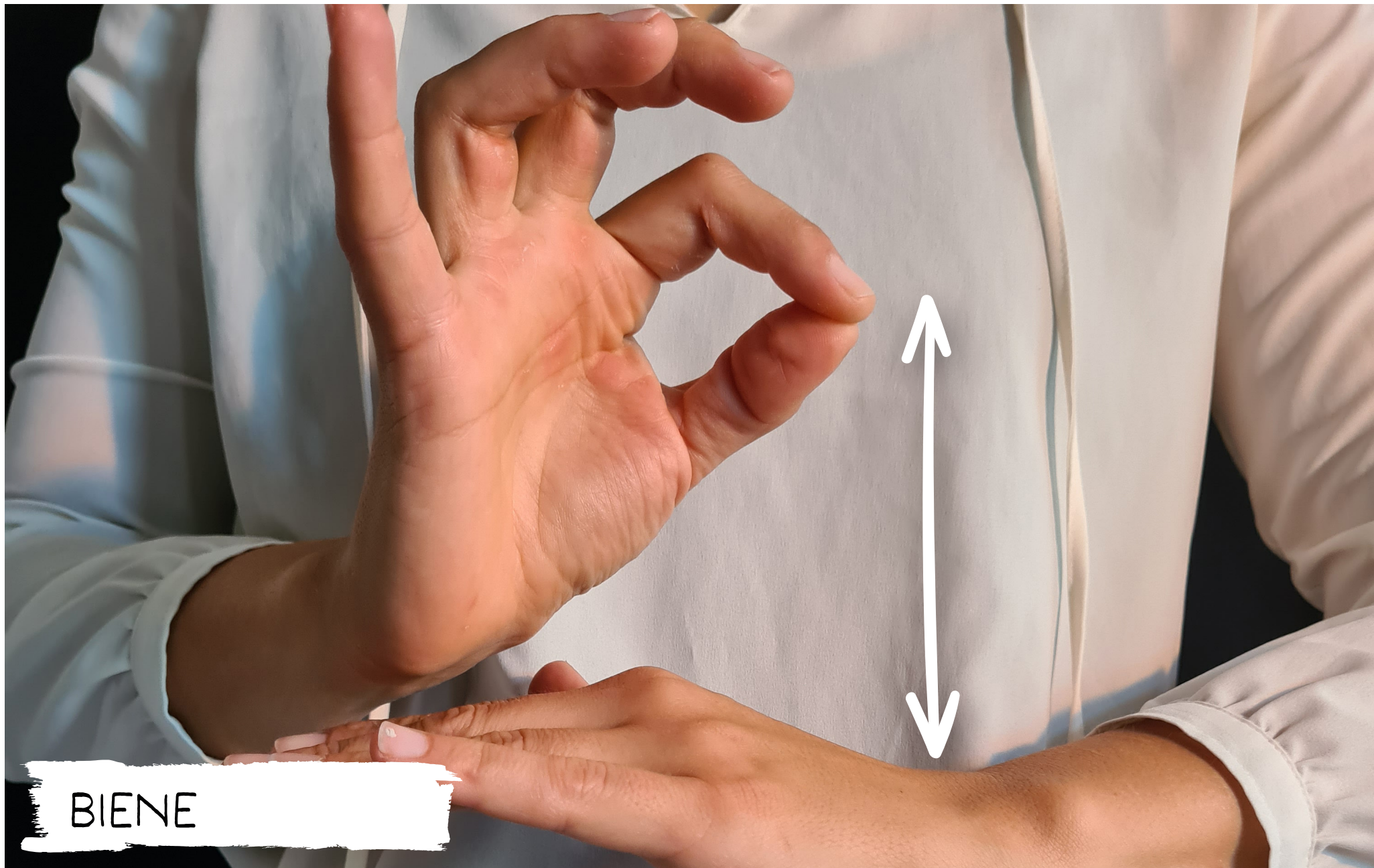




SCHNECKE



REGENWURM (WURM)







RAUPE

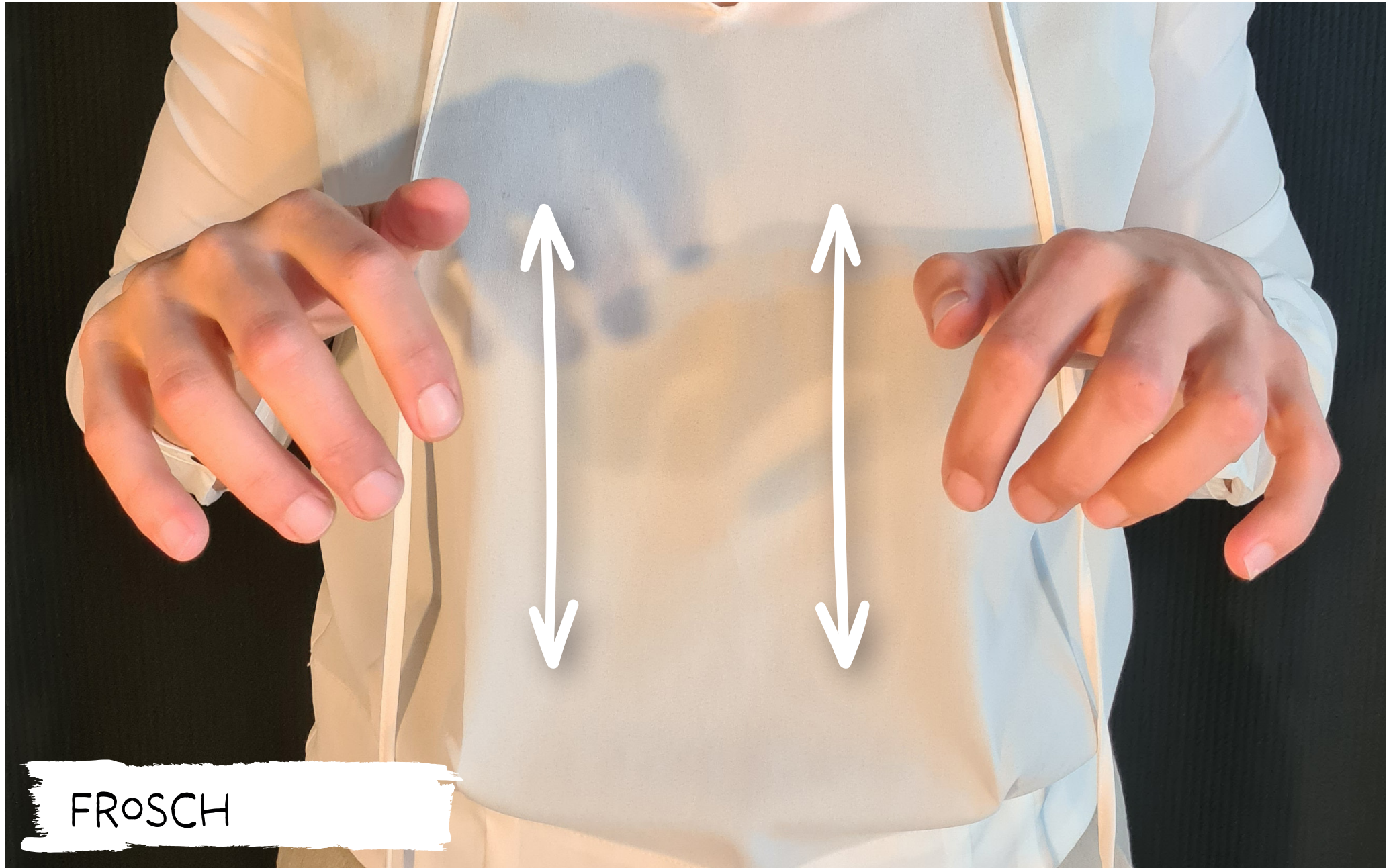


GRASHÜPFER



MARIENKÄFER (KÄFER)





FROSC



RINGELNATTER (SCHLANGE)





ENTE





FISCHREIHER





TEICHMOLCH (WASSERDRACHEN)



LIBELLE





FISCH





EICHHÖRNCHEN

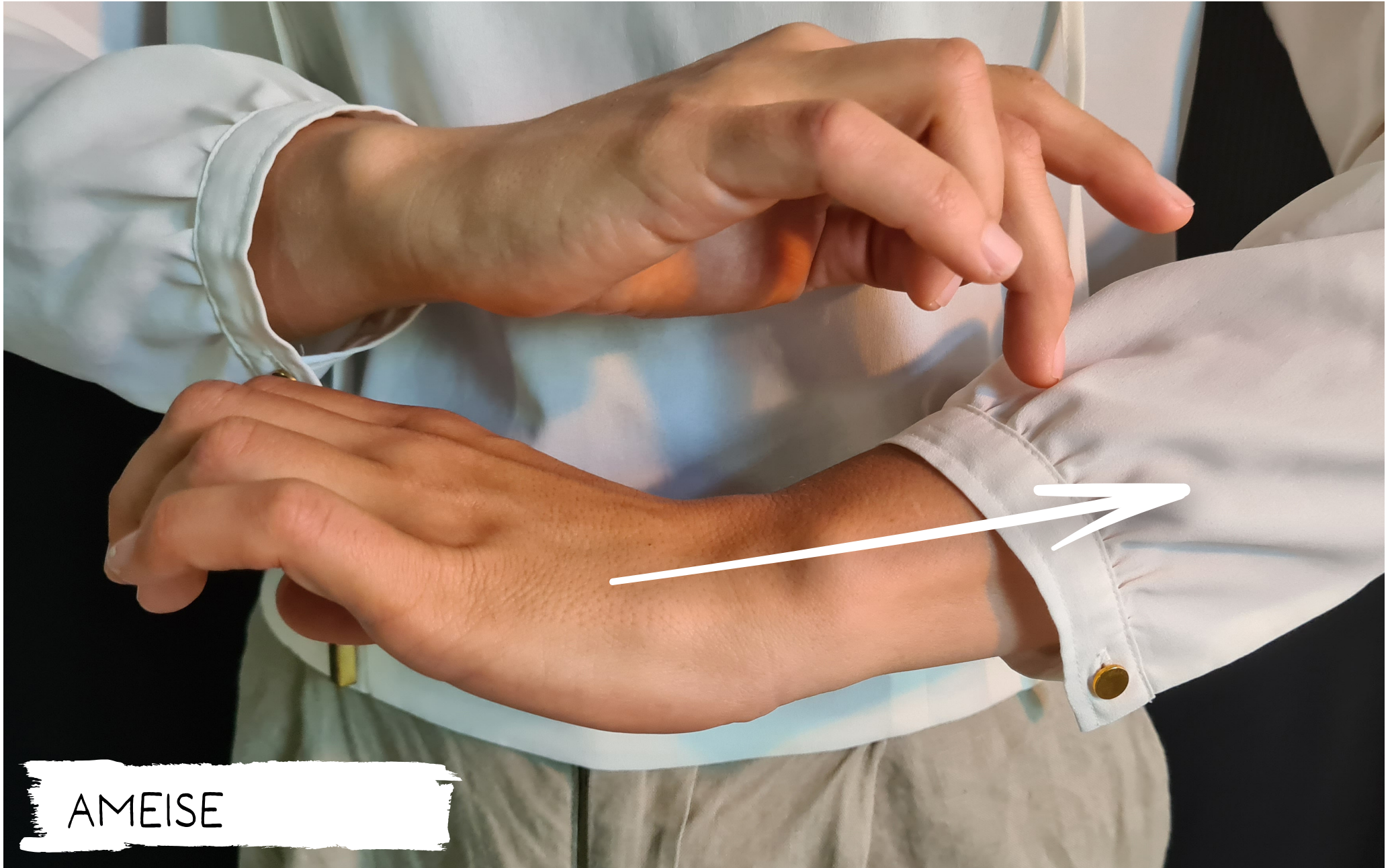


HIRSCH

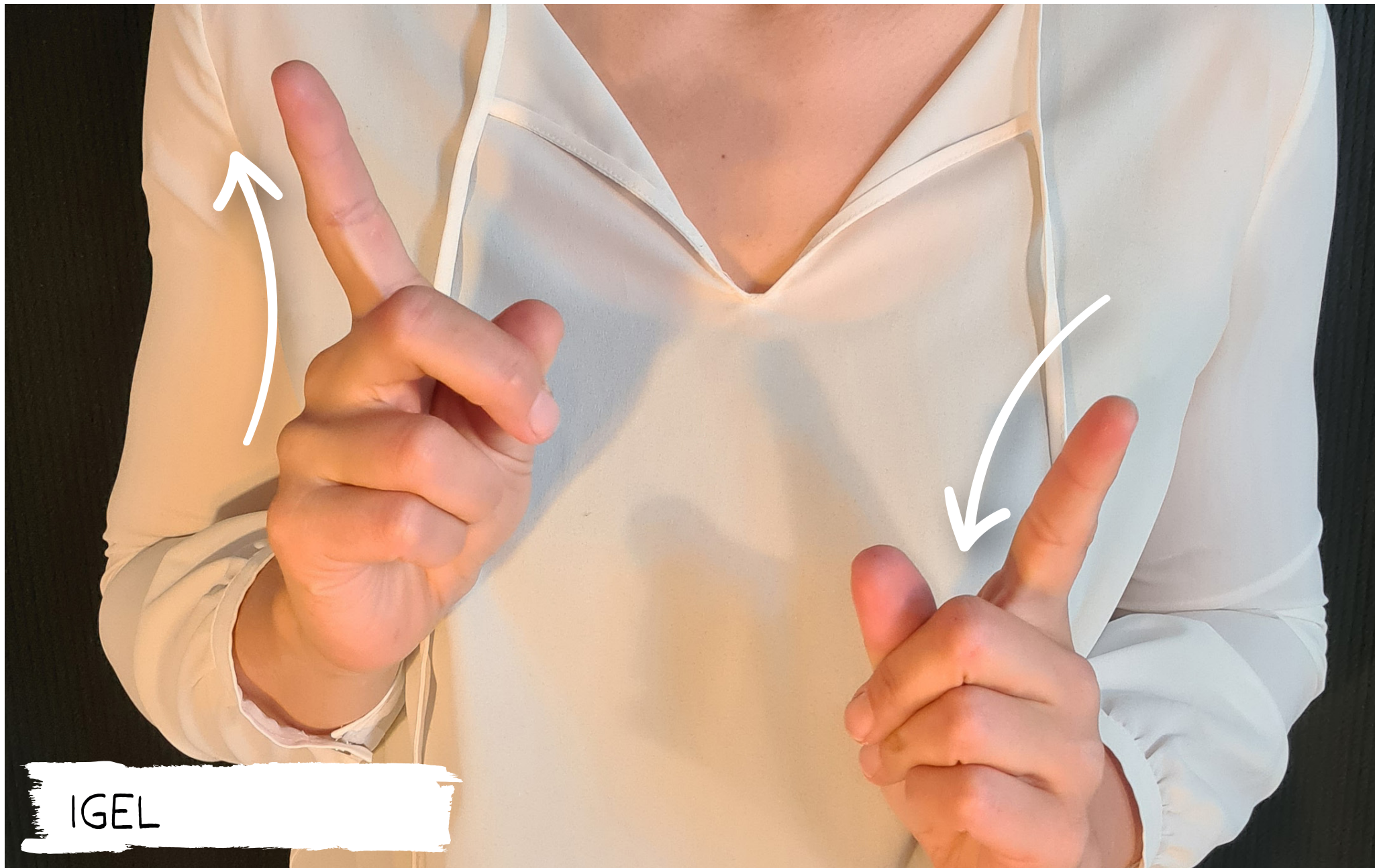




WILDSCHWEIN

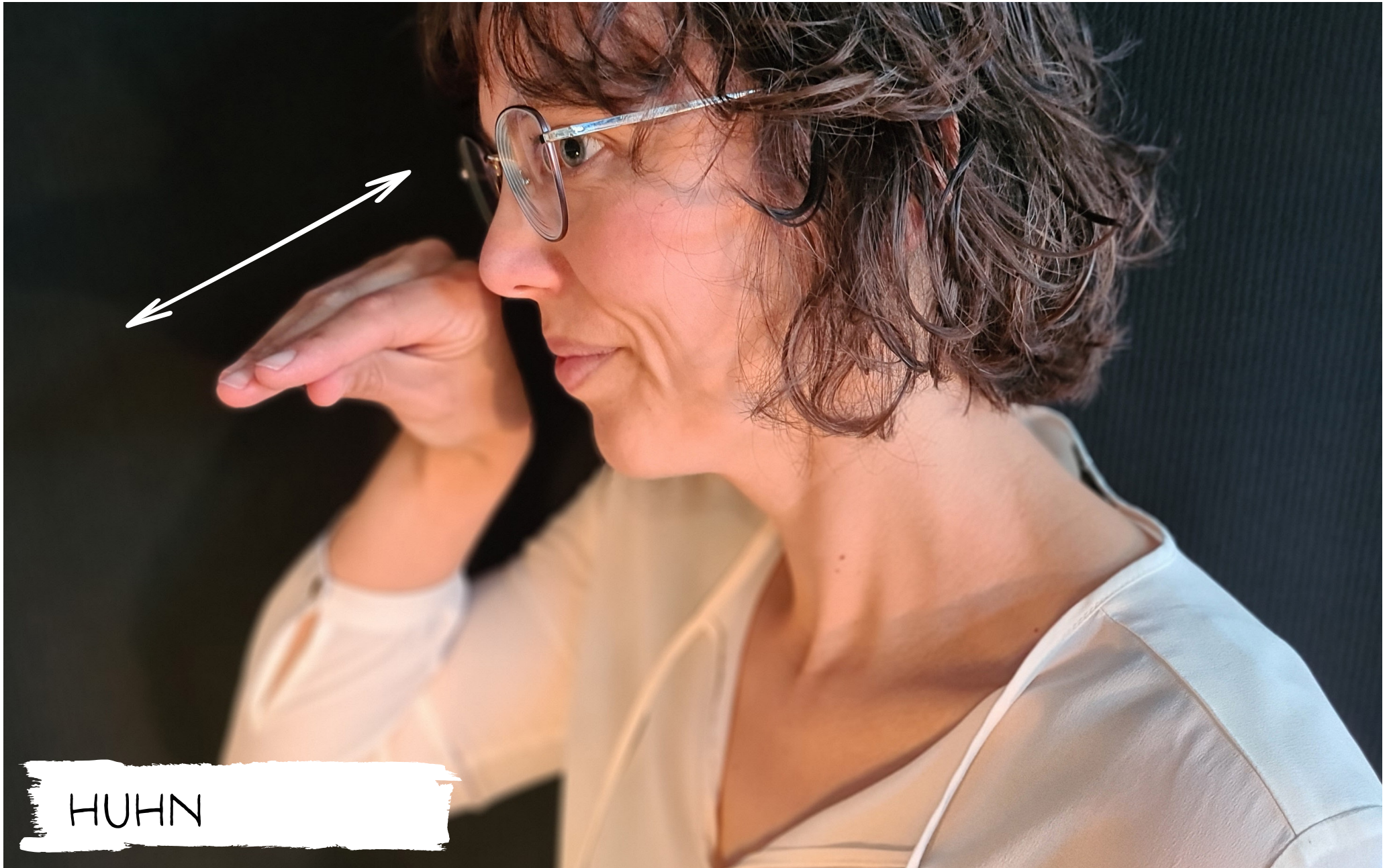








KUH





HUND



